

How to install SmathStudio with Wine

By Martin Inäbnit (Tinu)

(I am relatively new to Linux, but this is what I did on my old Linux Netbook to use SMath while on the move. There are obviously still some further problems to solve. Probably I am still missing some necessary dll's since I am getting quite a long error-list when starting SMath from the Wine-console. Any help from an expert would be greatly appreciated).

The installation under Wine overcomes some of the well known drawbacks of the standard mono-version on Linux viz. no embedded pictures if file was created with windows-version (especially annoying with the interactive handbook), problems with certain plug ins, poorer visual appearance, garbled text regions, tab-key not working (although Ctrl-space does the job) etc.

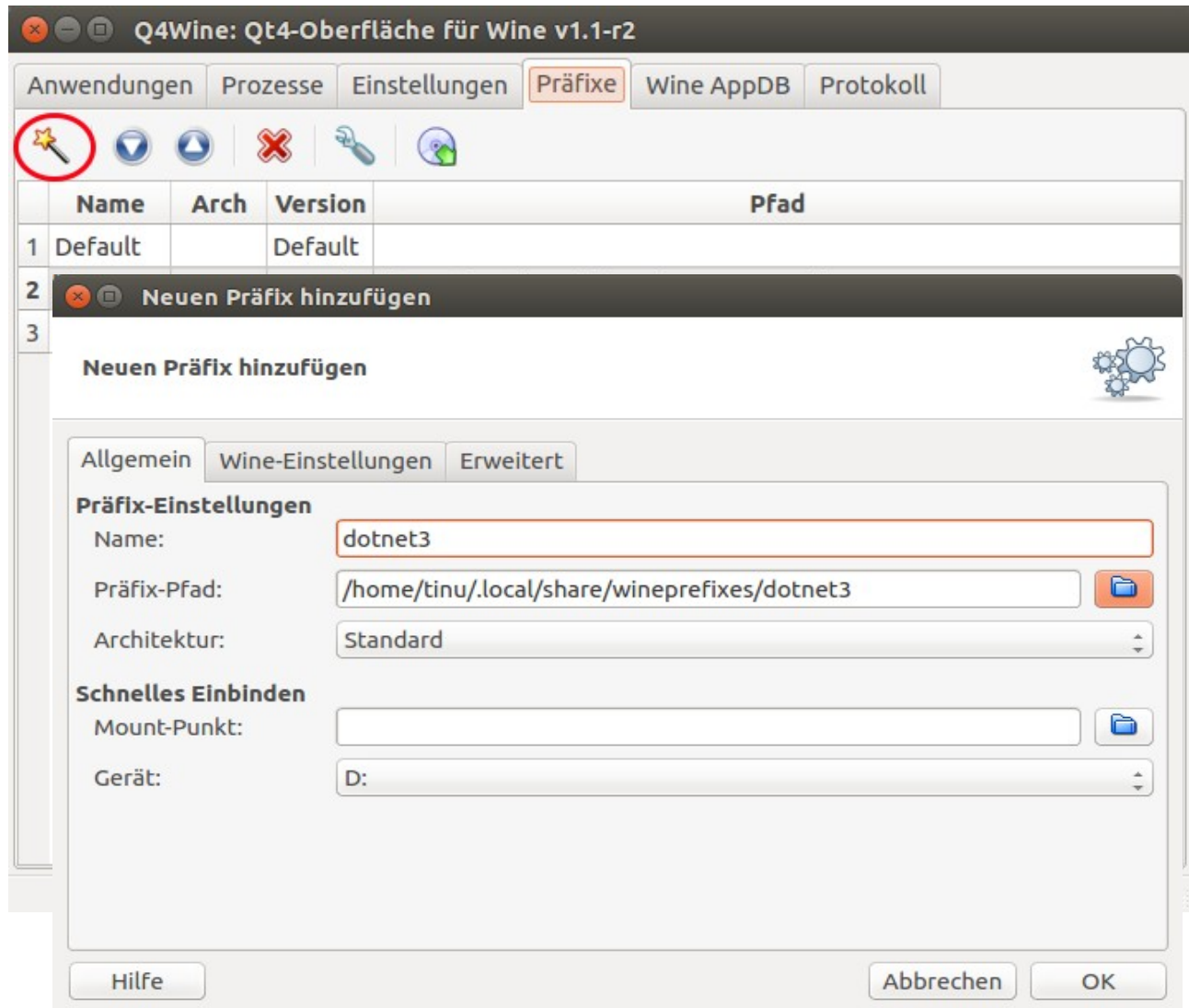
My System:

Computer: Acer Aspire One with Ubuntu-Linux 14.04 LTS (Trusty Tahr)
and Wine version: 1:1.6.2-0ubuntu4 (meta package from Ubuntu-repository).
To make life with Wine a bit easier I am also using Q4Wine from Ubuntu-repository
(version: q4wine 1.1-r2-1).

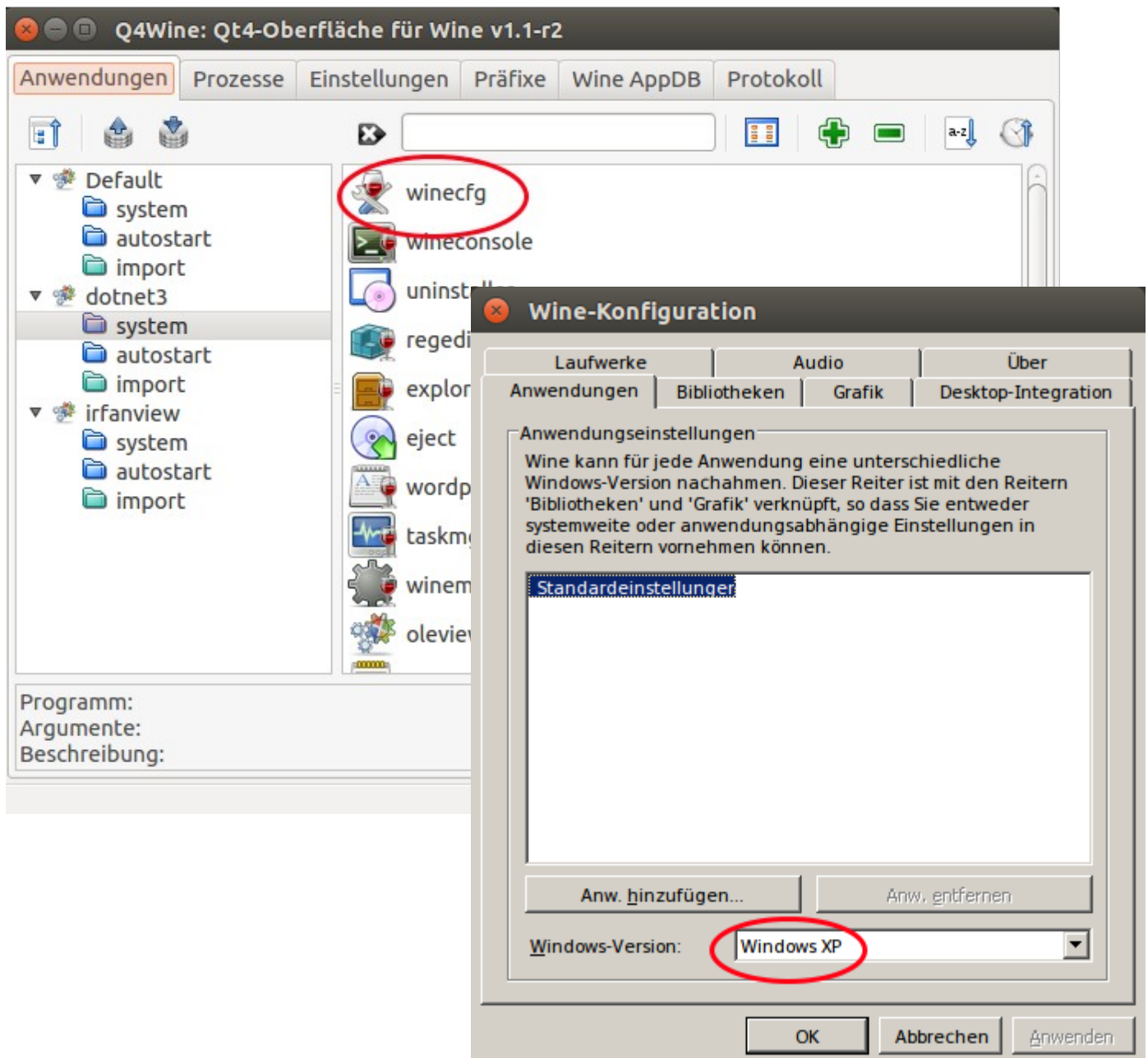
(Q4Wine homepage has unfortunately shut down because of the current Ukraine conflict, so users of other Linux-distributions might have to search elsewhere or use plain Wine and Winetricks).

Steps: (with Q4Wine)

1) Create new wine-prefix for use with .net instead of native mono:



- 2) Create new prefix and configure default settings by starting winecfg in the new prefix for the first time (this takes a few seconds):

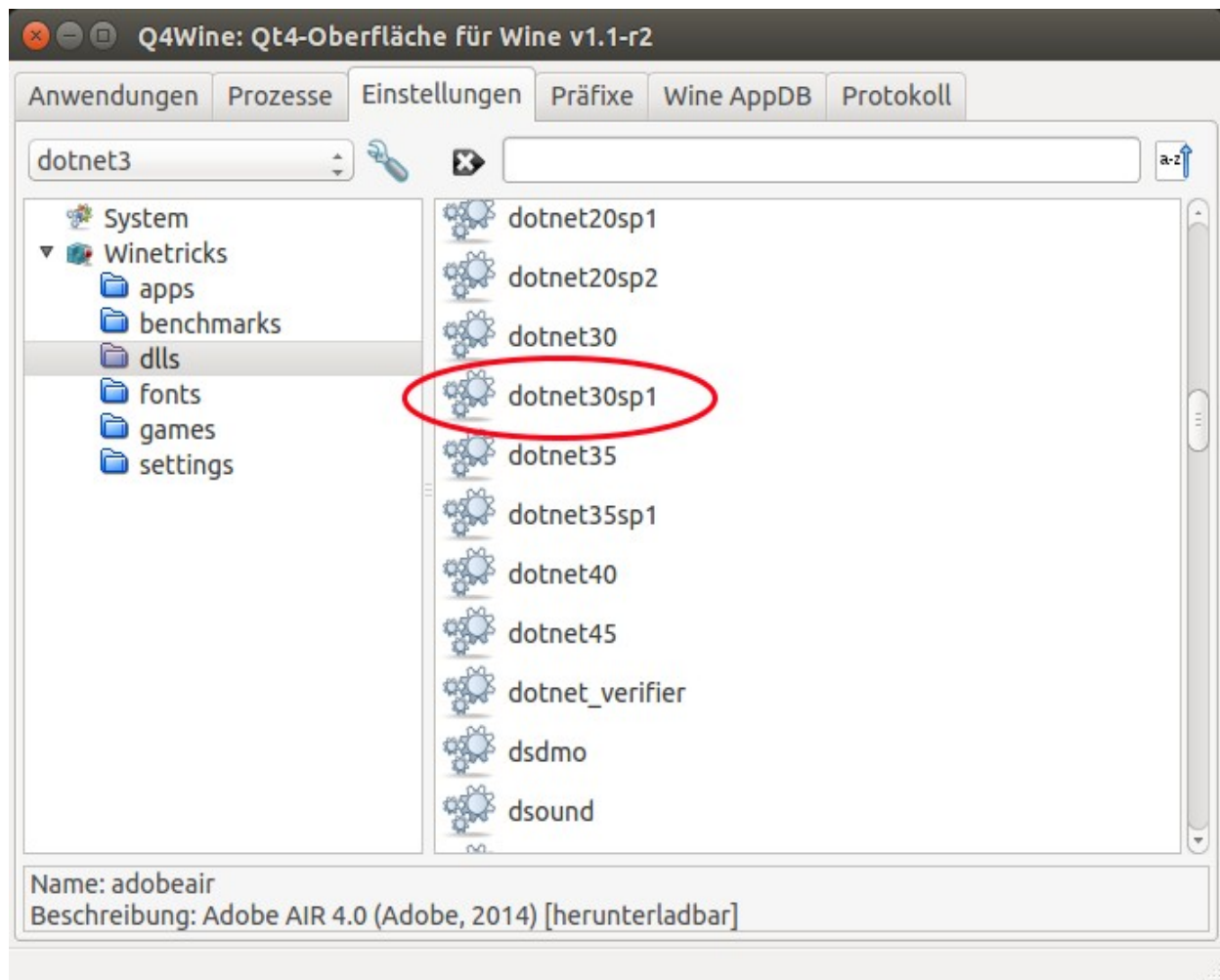


I didn't test other versions of Windows.

3) Install .net instead of mono:

according to some info from the internet site: WineHQ this version of .net seems to work best with the current wine release on Ubuntu trusty.

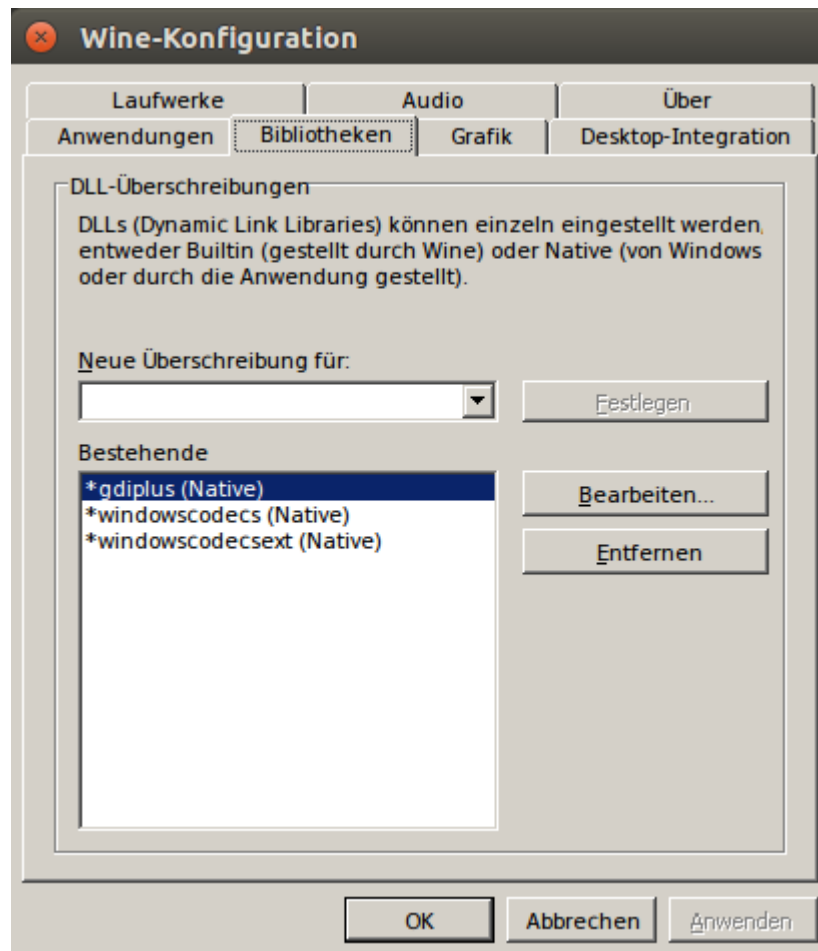
Installation of sp1 will automatically remove mono (not from your system, but only from the current Wine-prefix!) and install .net 3.0 plus previous .net versions etc., so don't get confused by the different install windows popping up. Just install everything.



4) Use the same procedure for the following additional dll's:

- gdiplus
- windowscodecs

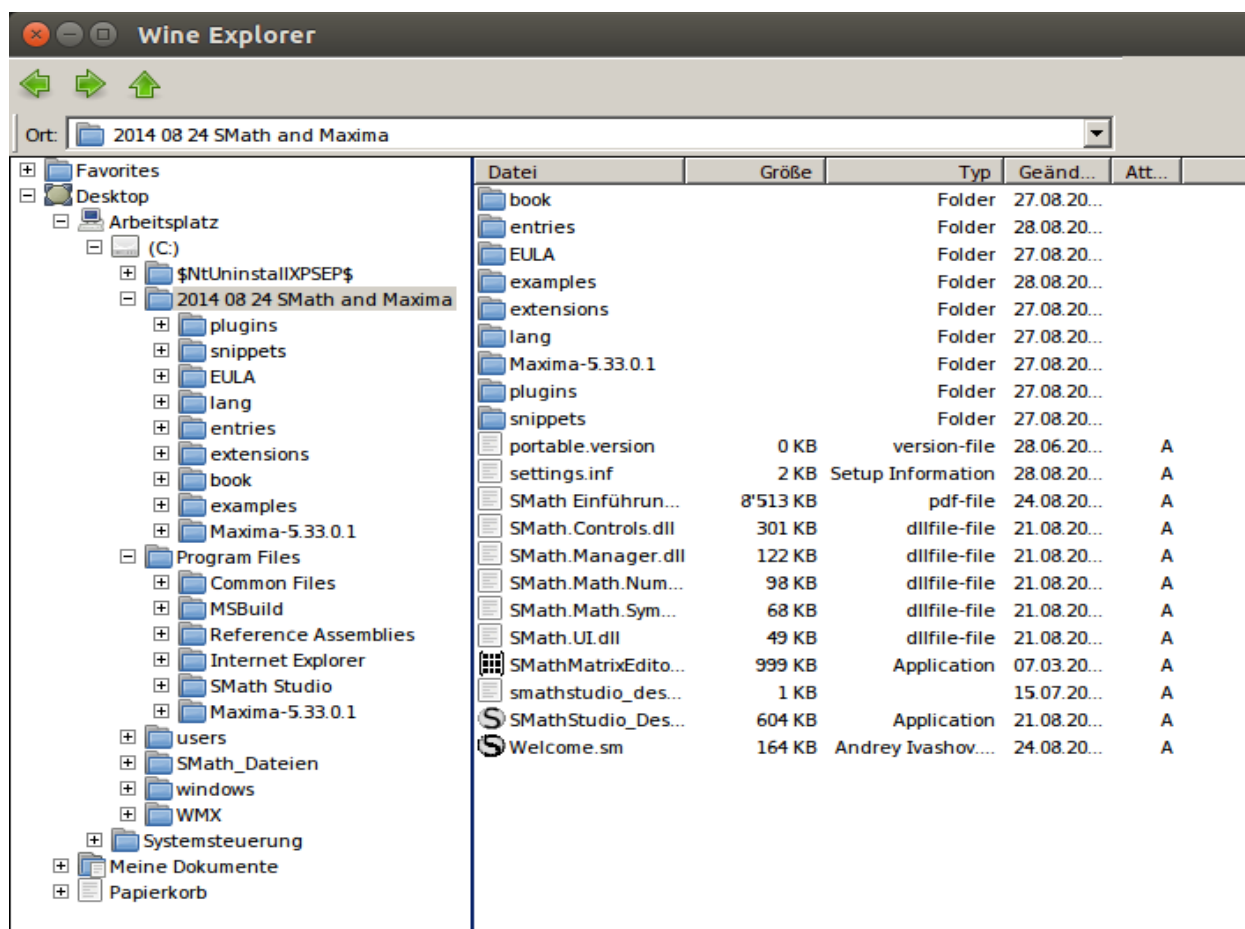
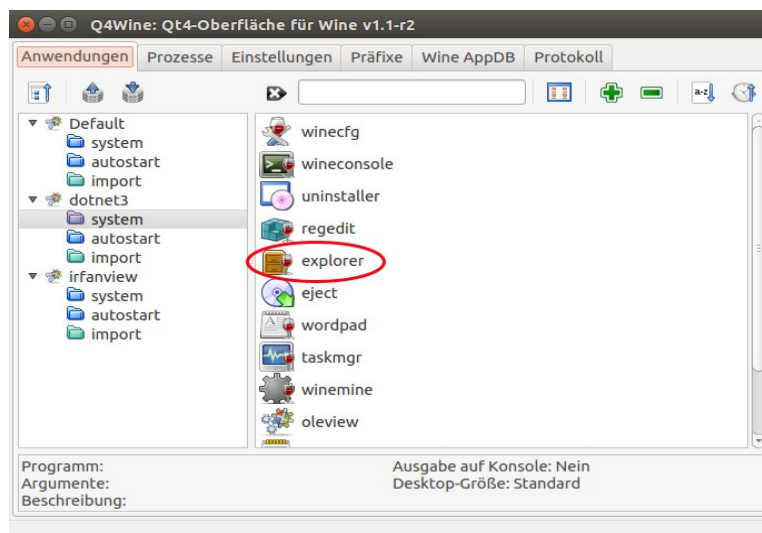
winecfg should now look like this:



5) Installation of SMathStudio:

I have installed both the windows-version and the FHB portable one and they seem to work equally well.

Using the Wine Explorer all the procedures are the same as with native Windows.



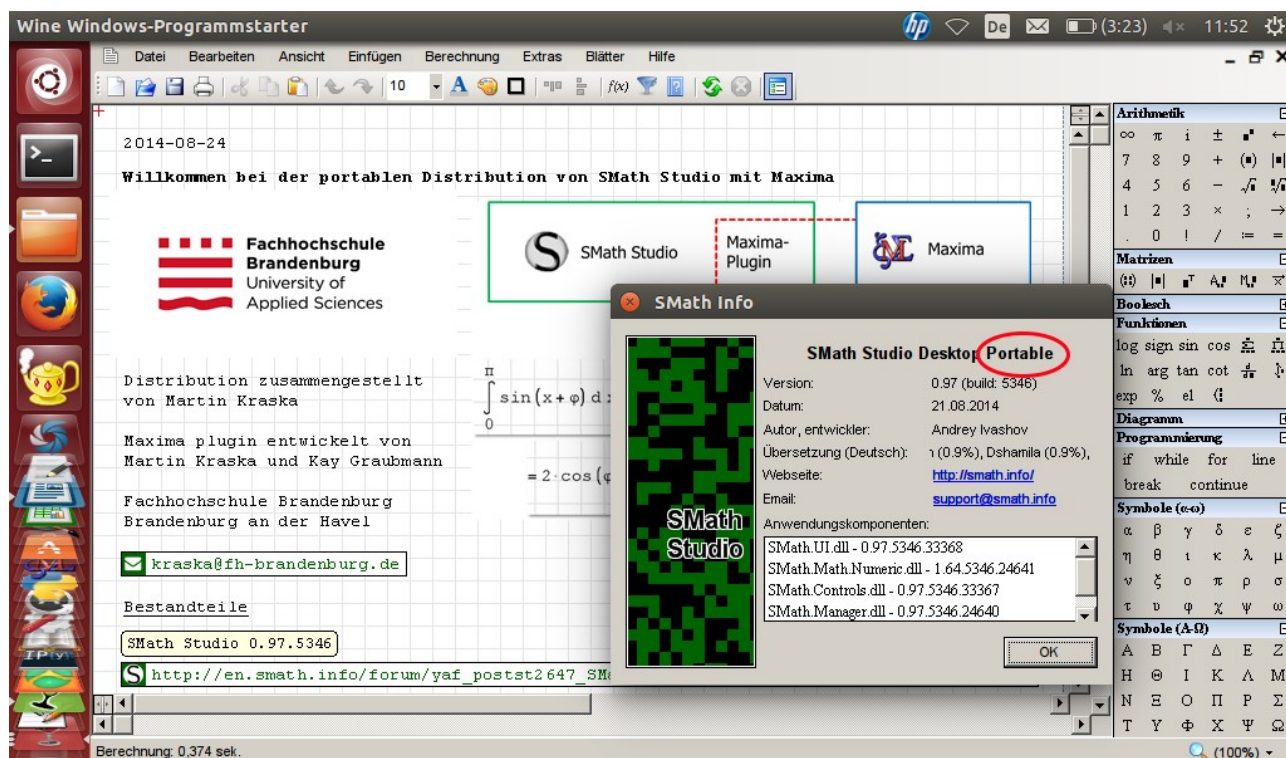
Double-click on exe-file starts SMath. For windows version you should get a short cut on the desktop.

Desktop-shortcut for portable version:

Use an editor to create a file named e.g. SMathStudio.desktop.
It should look somewhat like this:

```
[Desktop Entry]
Name=SMath Studio Desktop
Exec=env WINEPREFIX="/home/your directory/.local/share/wineprefixes/dotnet3" wine start
'C:\\your directory\\2014_11_16_SMath_and_Maxima\\SMathStudio_Desktop.exe'
Type=Application
StartupNotify=true
Comment=SMath Studio Desktop
Path=/home/tinu/.local/share/wineprefixes/dotnet3/drive_c/your
directory/2014_11_16_SMath_and_Maxima/
Name[de_DE]=SMath Studio
Icon=/home/tinu/.local/share/wineprefixes/dotnet3/drive_c/your
directory/Smath_Dateien/Bilder_u_Icons/SSLogo32.png
```

n.b. for better readability I changed the spaces in windows filenames to underscore. Otherwise spaces as well as backslashes have to be preceded with an extra backslash.

Final result:**Bugs and Problems**

So far I found the following:

- Maxima causes SMath to freeze in M. Kraskas portable versions up to 24.08.2014. The version from 16.11.2014 (with Maxima 5.34.1) works, at least on my system !! I didn't try the official windows-version.
- Hoovering with mouse over formulas displays black rectangle.